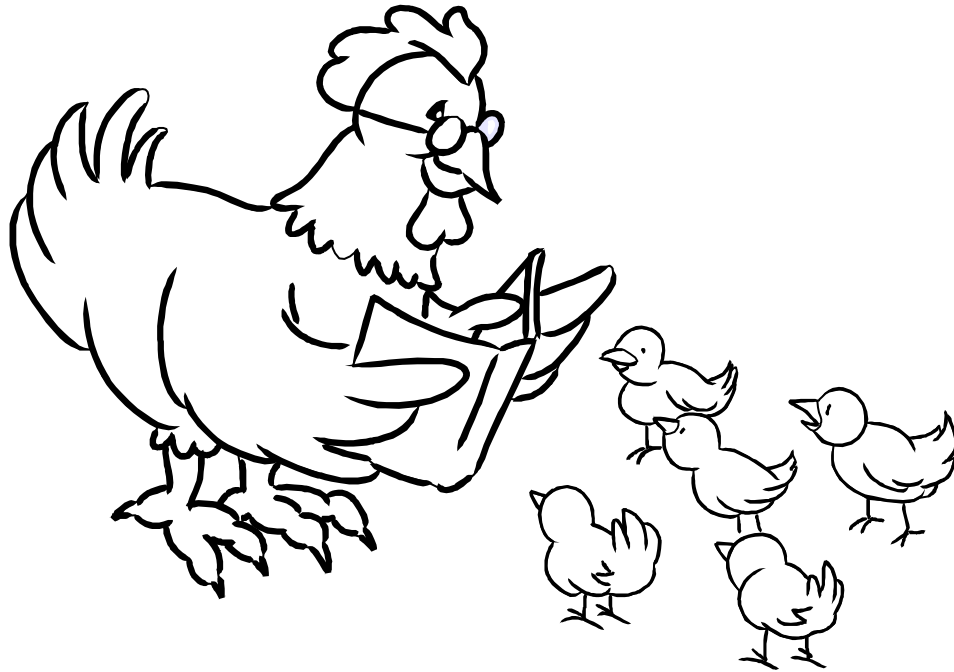


LEARNING ABOUT POULTRY
COLORING BOOK

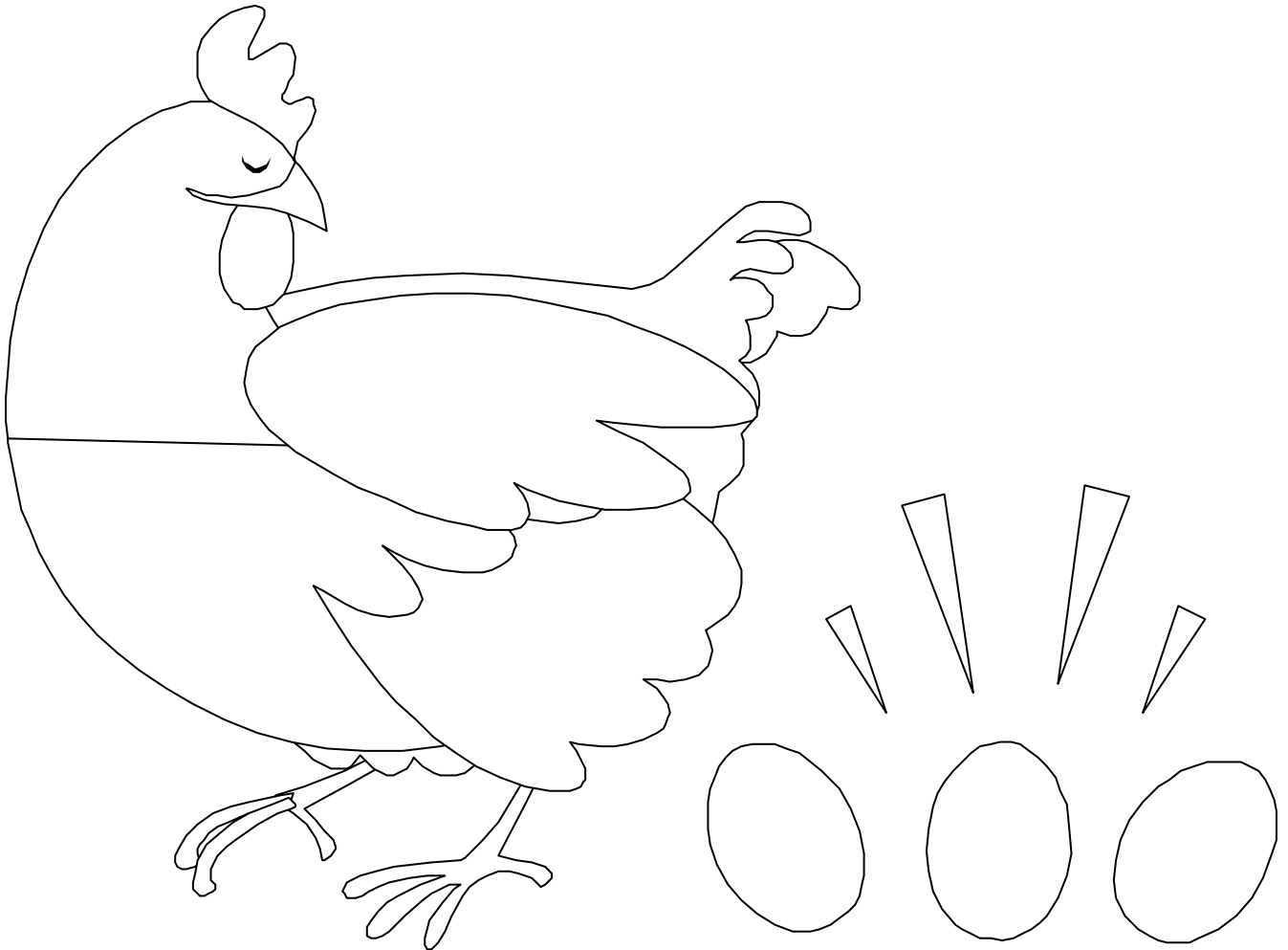


MISSISSIPPI STATE
UNIVERSITY

DEPARTMENT OF POULTRY
SCIENCE

HOW LONG DOES IT TAKE A HEN
TO LAY AN EGG?

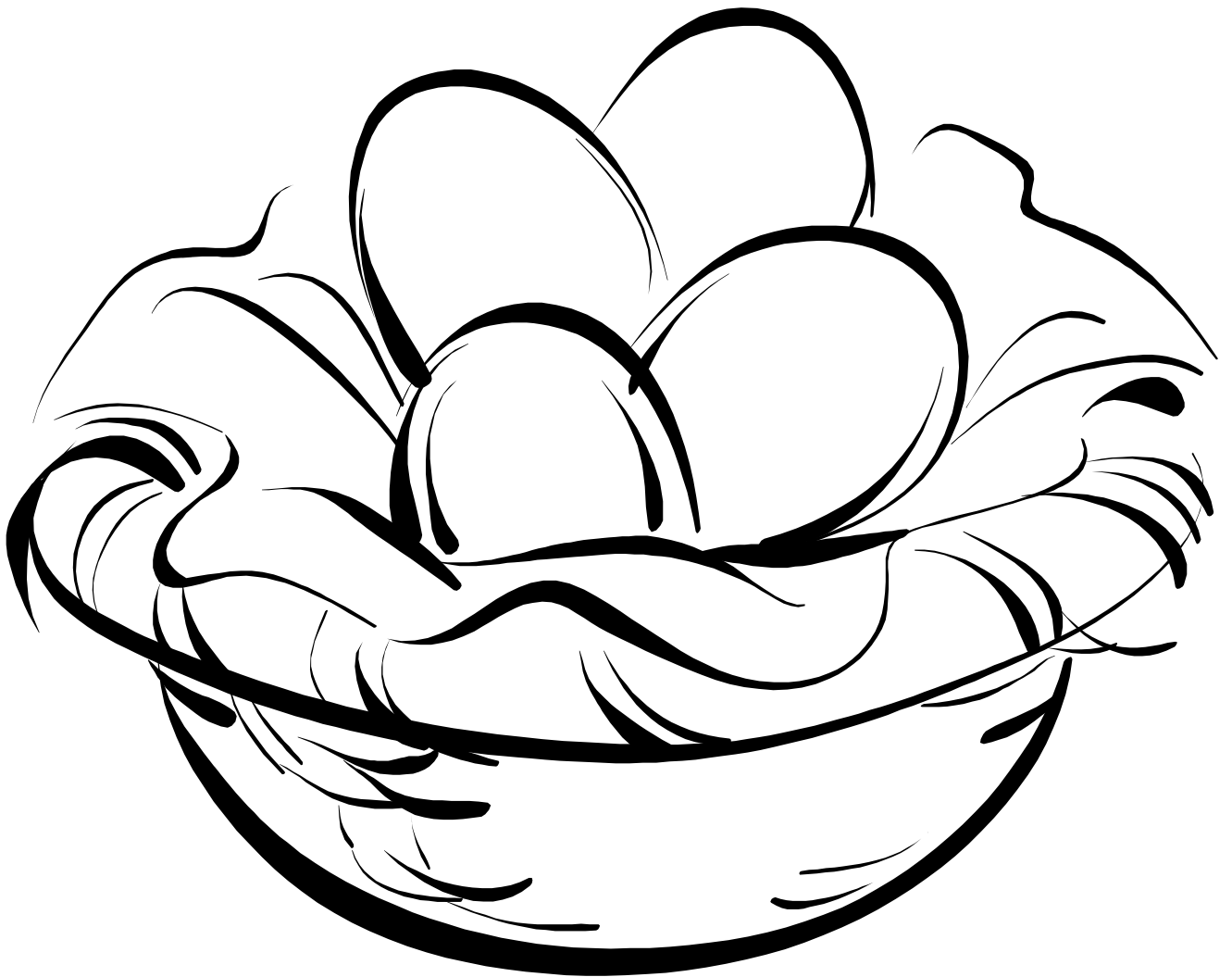
Answer: It takes about 25 hours for a hen to form
an entire egg within the body and lay it.



Fun Facts:

1. Different types of chickens lay different colored eggs such as white or brown eggs and some hens even lay blue or green eggs.
2. You can tell what color a hen's egg is going to be by the color of her earlobe. If her earlobe is white she will lay a white egg, but if it is red she will lay a colored egg.

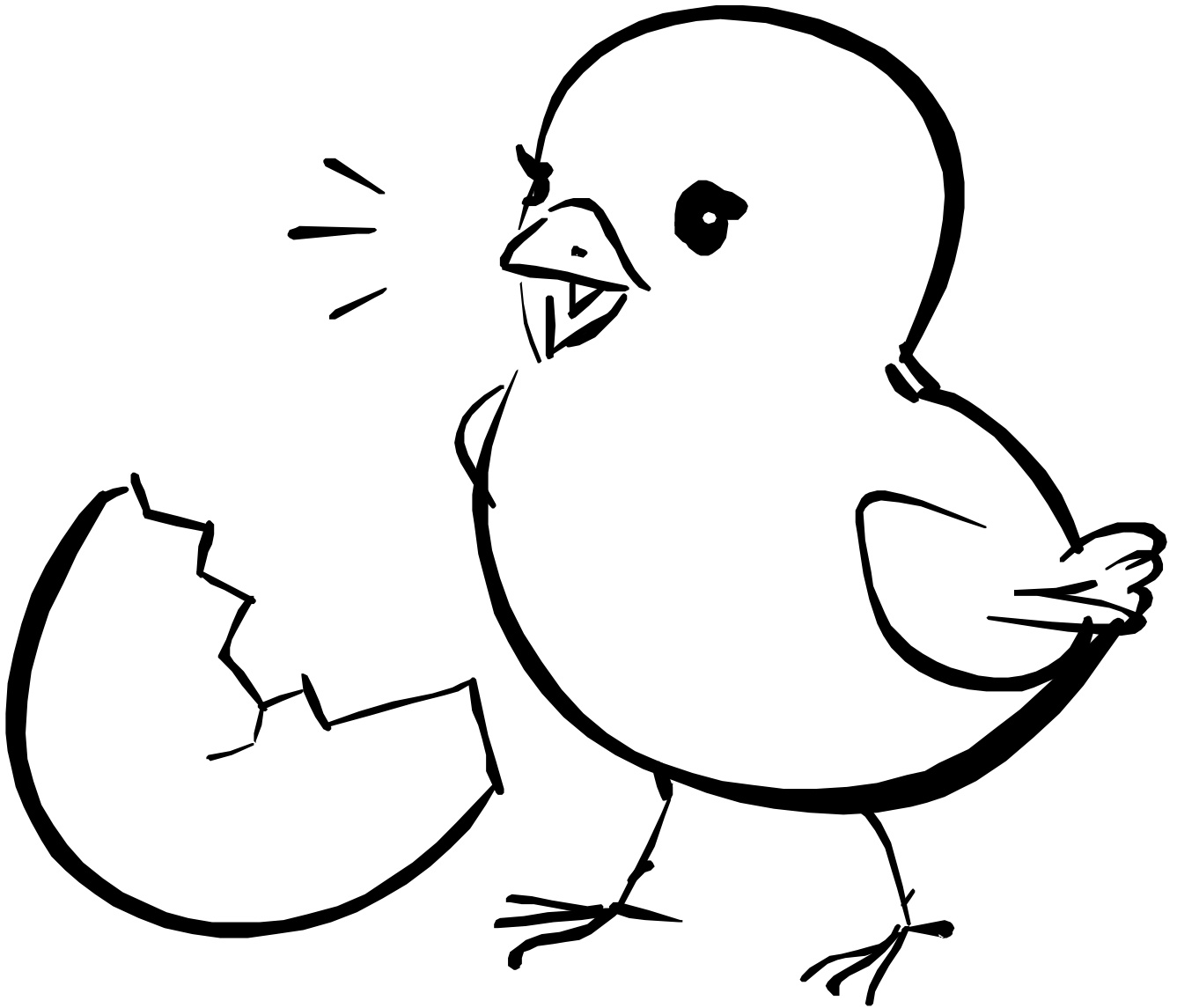
THE HATCHING EGG!



Fun Facts:

1. An egg has to be kept at a temperature of approximately 100 degrees Fahrenheit for a chick to develop.
2. It takes 21 days for a chick to fully develop inside the egg and hatch out.
3. The chick survives by consuming nutrients from the yellow yolk inside the egg.

THE CHICK!

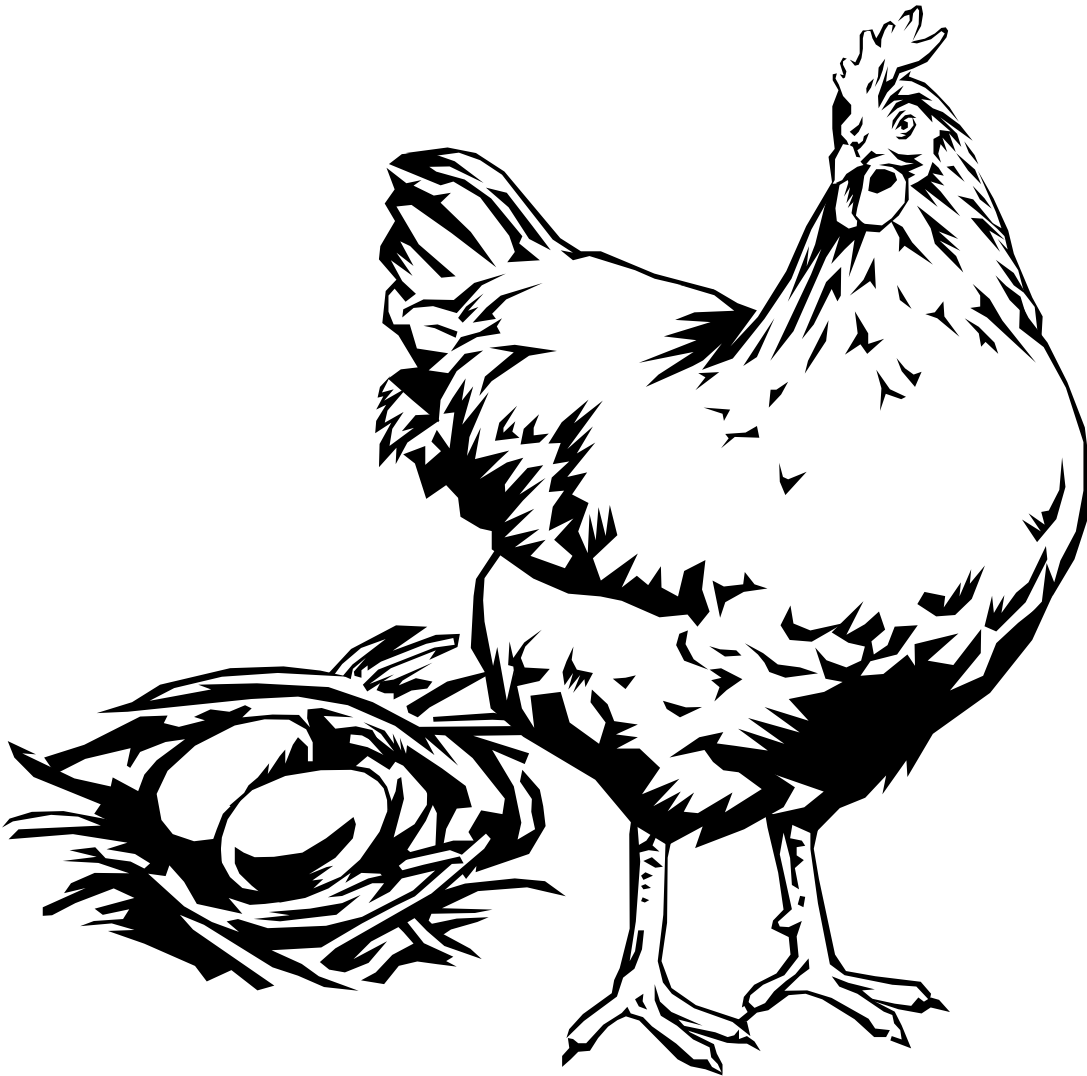


Fun Facts:

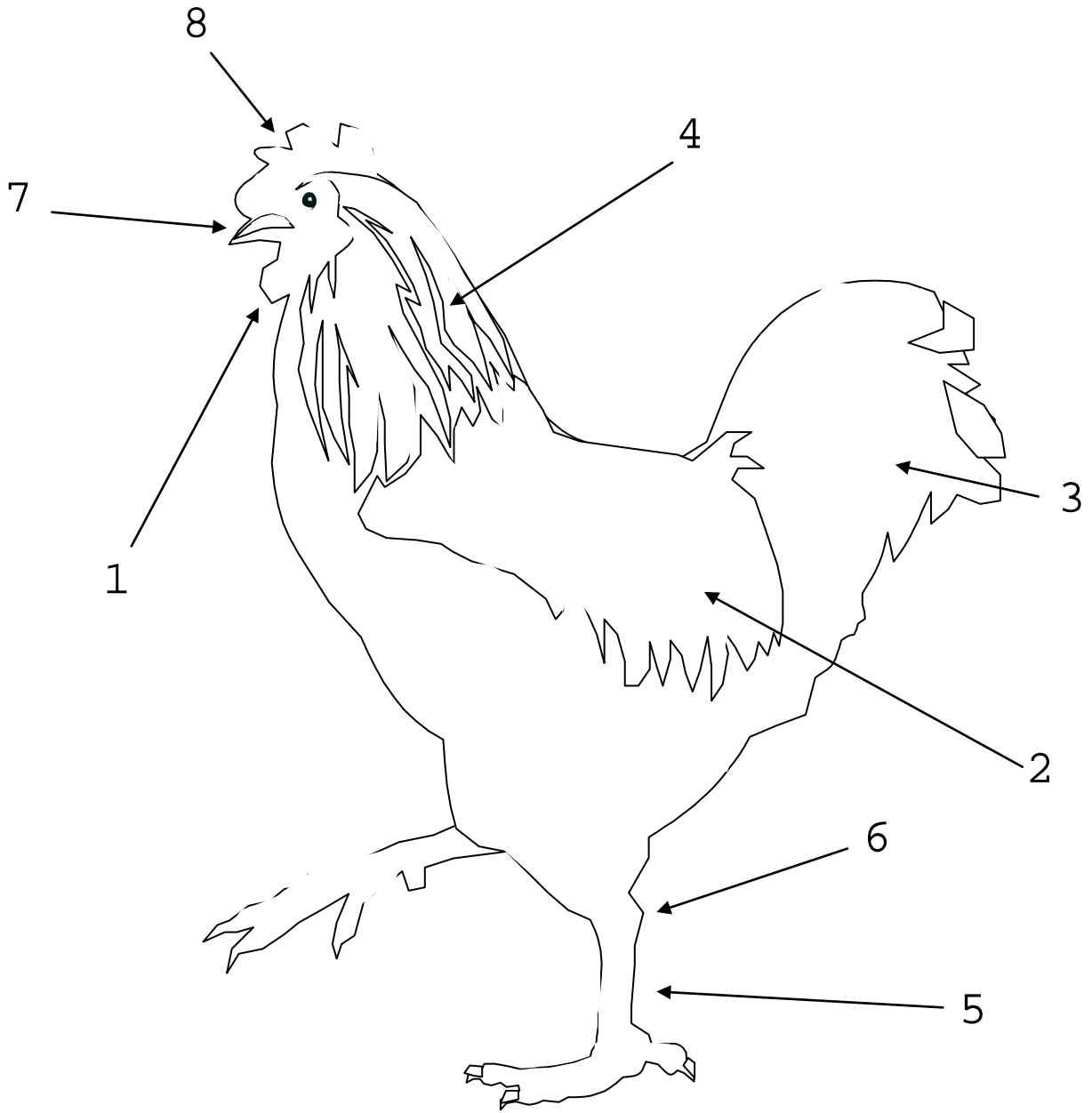
1. When a chick hatches it is already able to walk and run, and is able to eat and drink on its own.
2. A chick does not have feathers but is completely covered in a soft, fluffy coat which is called down.

WHAT COLOR ARE CHICKEN'S ?

Answer: Chickens come in many different breeds and each breed has a unique color that range from black and white to red, green, blue, and many other colors.



DIFFERENT PARTS OF THE CHICKEN



Word bank: 1.Wattle, 2.Wing, 3. Tail,
4.Hackle feathers, 5.Shank, 6 Hock, 7.Beak,
8.Comb.

CAN YOU DRAW YOUR OWN
CHICKEN?

For more information please contact:
Department of Poultry Science
Mississippi State University
Box 9665
Mississippi State, MS 39762
Phone: 662-325-3416
Fax: 662-325-8292
Email: poultry@dept.msstate.edu
Web Site: www.msstate.edu/dept/poultry